



PLUG VALVE

Series - PLV 01





PLUG VALVE :

MATERIALS OF CONSTRUCTION :

Body : WCB, ASTM A395 , CF8 ,CF8M, 4A, 6A
 Lining : PTFE , PFA , PO ,FEP
 Seat : Metal , Teflon Coating & Soft
 Size Range : 2" to 16"
 Pressure Range : 150# - 600#
 Operation Method : Manual , Worn gear ,Electric ,Pneumatic Actuator, Piston Cylinder, Scotch Yoke

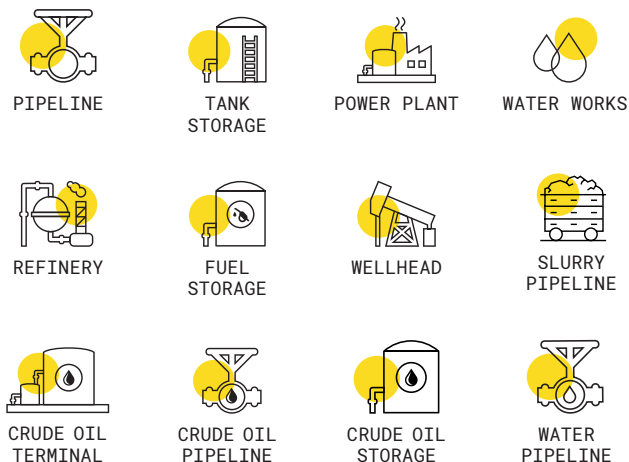
FEATURES :

1. Plug valve is an auxiliary valve used in opening and throttling of high pressurized systems. It is used as by-pass to the line valve; it balances the pressure and provides the safe opening of line valve.
2. Plug valves have a conical or cylindrical obturator rotating around the axis perpendicular to the flow direction.
3. Plug valves for high pressure and/or high temperature services. It is important to make the material selection according to the fluid corrosion.
4. Valve body and stem can finish emergency injection seal, through the grease injection valve, the stop leak compound can achieve short-time seal, therefor to buy time handling the scene.
5. Full teflon PTFE lined plug valve can be used in the whole pressure range to avoid leakage and shut off more convenient to the line system and pipeline maintenance;

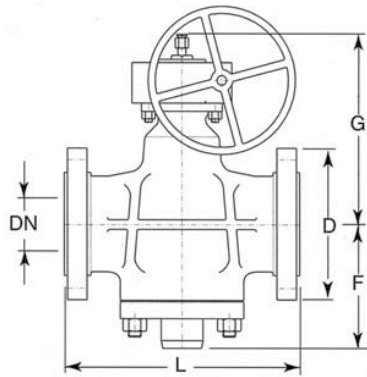
STANDARDS

Design	API 6D
End Connection	ASME B16.47 & ASME B16.5 or ASME B16.25
FTF & ETE	ASME B16.10
Test	API 598

APPLICABLE INDUSTRY:

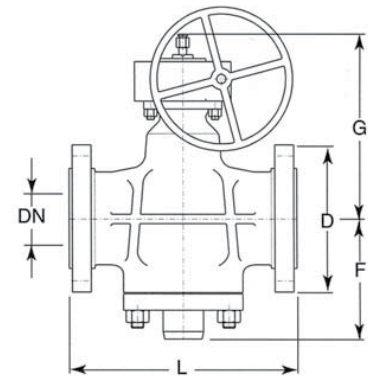


Class 150



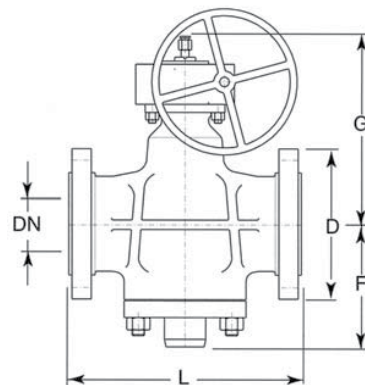
Size DN	Inch mm	6	8	10	12	14	16
L RF	mm	267	292	330	356	686	762
L BW	mm	457	521	559	635	686	762
D	mm	280	343	406	483	534	597
F	mm	240	260	280	300	330	350
G	mm	480	510	530	550	600	620
Hand wheel diameter	mm	500	500	650	650	650	650
Weight (approx.)	Kg	135	170	230	350	460	700

Class 300

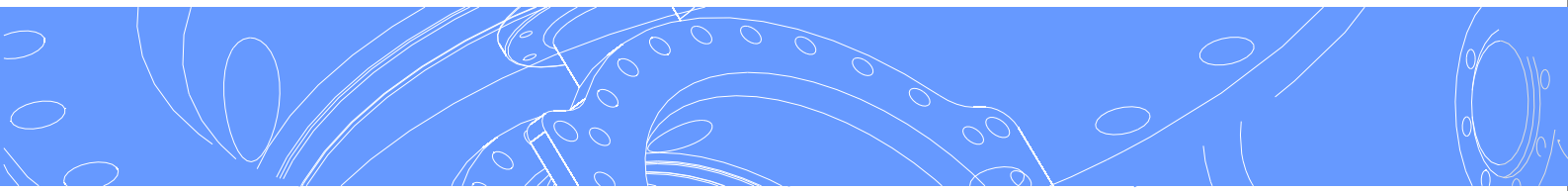


Size DN	Inch mm	6	8	10	12	14	16
L RF	mm	403	419	457	502	762	838
L RJ	mm	419	435	473	518	778	854
L BW	mm	457	521	559	635	762	838
D	mm	318	381	445	521	584	648
F	mm	240	260	280	300	350	370
G	mm	500	530	550	570	620	640
Hand wheel diameter	mm	650	650	650	650	650	650
Weight (approx.)	Kg	190	250	285	385	630	800

Class 600



Size DN	Inch mm	4	6	8	10	12	14	16
L RF	mm	432	559	660	787	838	889	991
L RJ	mm	435	562	663	790	841	892	994
L BW	mm	432	559	660	787	838	889	991
D	mm	273	356	419	508	559	603	686
F	mm	185	243	260	280	300	350	370
G	mm	380	520	550	570	580	610	625
Hand wheel diameter	mm	500	500	650	650	650	650	650
Weight (approx.)	Kg	135	210	390	550	680	860	1100



Dembla

Sales Office:

M/S. Dembla Valves Ltd.
C-30, Jai Matadi Compound, Kalher
Village, Thane-Bhiwandi-Agra Raod -
421302,
Maharashtra, India.
Tel - +91-9292234790 - 97
E-mail - expo@dembla.com
[More info - www.dembla.com](http://www.dembla.com)

Works:

M/S. Dembla Valves Ltd.
A/8, Arahm Logistic, Valshind Village,
Mumbai -Nashik Highway
(NH3), Bhiwandi
Thane - 421302. Maharashtra (India)