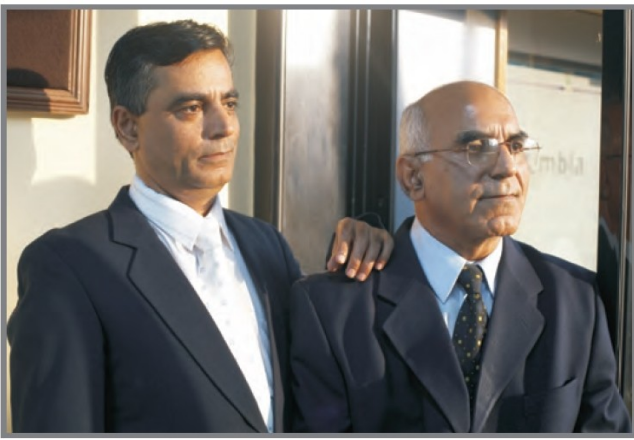




A Complete World of Opportunities  
A Whole World of Trusts





## About Us

Dembla Valves Ltd. was found in 1985 by a coterie of technocrats and visionaries with a goal to achieve the highest levels of perfection and excellence in their field of the industry. An industrial company with a core engineering focus. Dembla manufactures Butterfly Valves, Ball Valve Control Valves and Gate, Globe Check Valves catering to Oil, Gas, Power, Water Treatment and Desalination, Petrochemicals, Steel Industries.

Guided by proven management principles, Dembla scripted its own success story with focus on total turnkey solutions and on-time delivery schedules. Recognised internationally for these qualities, Dembla is marching ahead with an eye towards a bright future.

Dembla is producing wide range of valves, production setup is with a working area of 135000 Sq. Ft.

A World Class Manufacturing setup working on 'Lean Manufacturing Philosophy'. The entire setup is streamlined for a smooth production flow based on 'pull' system. The machine shop having state of the art latest pneumatically controlled machines to guarantee closed tolerances on valve components.

The Company is also has an R & D center for continuous technological up gradation in the existing range of products and additional new products for complete turnkey solution to our valued customers. The factory is equipped with modern hydraulic test benches separately sequenced for in house testing and customer / third party inspections. The factory having a very high capacity mechanized painting shop to cater requirements of world class painting procedures.

Dembla has risen to become one of the most trustworthy brand names in valve design and manufacturing.

## Vision

To become "Customers' Preferred Company" worldwide, that manufactures and delivers with Global Service Support, Valves and Actuators including large size and for severe services with zero defects within shortest lead time.

## Mission

Strengthen internal operating process, streamline the vendor base and establish pro-active planning mechanism to support establishment of sales and service globally.



# CERTIFICATES AND APPROVALS



# SERIES - GTV W-01

## Gate Valve

- The valves shall have a ductile iron body, and bonnet.
- The wedge shall be completely encapsulated with EPDM rubber.
- The sealing rubber shall be permanently bonded to the wedge to meet ASTM tests for rubber metal
- Every valve be 100% tested and qualified before packing and delivery
- They are widely used in series of industries, especially in water supply projects, public works, water treatment plant, fire fighting, etc.
- Size: 2"~24" (DN50~600mm)
- Rating: PN 16 to PN 25

**Pneumatic Actuator**



**Chain Wheel Operator**



**Gear Operator**



**Electrical Actuator**



SERIES - GTV-W- 01  
Gate Valve

# SERIES 7200

## Resilient Seated Butterfly Valve

- Can be installed in any position
- Reliable and effective Tight Shut – Off.
- Minimum Wear of Rubber Lining During Opening / Closing.
- Suitable for Vacuum Application
- Size : 2" - 48" (DN 50 - DN 1200mm)
- Rating PN 6 – PN 16

### Valve Operators :

- Lever
- Gear Box
- Pneumatic Actuator
- Electric Actuator
- Hydraulic Actuator



Series 7200  
Resilient Seated Butterfly  
Valve

# SERIES 7500

## Double Eccentric Butterfly Valve

- Sturdy & Rugged design Valve in accordance with AWWAC -504 / BS En 593
- Valve body & disc with Fusion Bonding Epoxy Coating with Ebonite Lining
- Better seating effect, due to Double Eccentric disc design
- This also gives extra life to valve seal due to minimum contact wear.
- Additional features available in consultation with our design & development department.
- Size : 80 NB through 2200 NB
- Rating : PN 6 to PN 25

### Valve Operators

- Lever
- Gear Box
- Pneumatic Actuator
- Electric Actuator



Series 7500  
Double Eccentric Butterfly Valve

# SERIES - ARV 01

## Air Valve

- Air Valves Double Chamber / single, double and triple function
- Air valves are hydro mechanical devices designed to automatically release air and wastewater gases or admit air during the filling, draining or operation of liquid piping systems for water and wastewater services.
- Air Valve are designed to perform three function
  - The venting of large volumes of air on the start-up of the system, while pipelines are being drained.
  - The intake of large volumes of air on shut-o! of the system, while pipelines are being drained.
  - The discharge of pressurized air pockets during the operation.
- Sizes : 40 NB Thru 500 NB
- Rating : PN 10 to PN 40  
(Higher Rating Available on request)

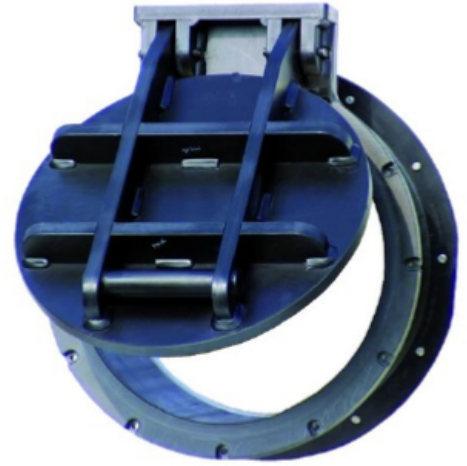


Series ARV 01 Air Valve

# **SERIES - FLP 01**

## **Flap Valve**

- The primary application of flap valves is for surface water drainage associated with rivers, estuaries and sea water outfalls to prevent reverse flow conditions.
- The flap valves should be positioned on the outfall structure
- An inclined seating plane is used to ensure that the valve will operate a 'Positive close' position
- Use in surface water, waste water and sea water applications.
- Size : 50 NB Thru 300 NB
- Rating PN 10 to PN 25  
( Higher Rating Available on Request)



Series FLP 01  
Flap Valve

# **SERIES - NSCV 01 Non**

## **Slam Check Valve**

- Non-slam valves have a short stroke, which facilitates soft closing quickly in the event of rapidly reduced flow to prevent water hammer.
- One of the primary advantages of non-slam check valves is their ability to effectively prevent water hammer, and, therefore, eliminate resultant pressure swings, vibrations, and damage.
- Non Slam Check Valve experience minimal wear over time.
- Size : 50 NB to 1000 NB
- Rating : PN 16 - PN 25  
( Higher Rating Available on Request)



SERIES - NSCV 01 Non Slam Check  
Valve

## **SERIES - AXC V 01**

### **Axial Nozzle Check Valve**

- Axial Nozzle Check Valves are designed to have drip tight sealing in case of back flow. Moreover, the valve disc also guarantees complete closure.
- Due to its spring mechanism, closure of the valve is obtained before back flow reaches the valve, thereby minimizing the surge conditions.
- As a result, DEMBLA Check Valve operates in a fast way and closes silently.
- Check Valve body is design to minimize the head loss, and can be installed in any position, flow up or flow down.
- Size : 50 NB thru 1000 NB
- Rating : PN 10 to PN 25  
(Higher Rating Available on request)



SERIES - AXC V 01 Axial Nozzle Check Valve

## **SERIES - SCV 01**

### **Swing Check Valve**

- swing check valves come with both metal and resilient seats.
- Installed in pumping applications to prevent back flow they can be used for drinking water as well as waste water.
- All interior parts are stainless steel or coated with drinking water approved epoxy or EPDM.
- Resilient seat provides a drop tight closure and due to the light weight it requires a minimum of force to open/close
- Shaft fitted in the bonnet allowing for easy maintenance without removing valve from pipeline
- Free protruding shaft end for mounting of lever and weight or spring to assist valve closing and avoid water hammer
- Size : 50 NB thru 1000 NB
- Rating PN 10 to PN 25



SERIES - SCV 01 - Swing Check Valve



**SALES OFFICE :**

M/S Dembla Valves Ltd  
C-30, Jai Matadi Compound Kalher Village,  
Thane-Bhiwandi-Agra Road -421 302, Maharashtra India.  
Tel : +91-09272234790 - 97  
E-mail - expo@dembla.com

**WORKS :**

M/S Dembla Valves Ltd  
"A/8", Arham Logistic, Valshind Village,  
Mumbai-Nashik Highway (NH), Bhiwandi,  
Thane - 421302. Maharashtra(India)