

DEMBLA VALVES LTD

Industries We Serve



Oil & Gas



FPSO



Petrochemical & Fertilizer



Metal & Mining



Power & Water



Chemical & Pharmaceutical



Dembla

A Leading Valve Design and Engineering Driven Company

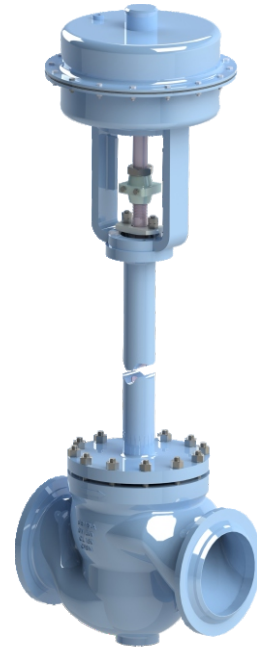


More info - www.dembla.com

Globe Control Valve, Series - 1100



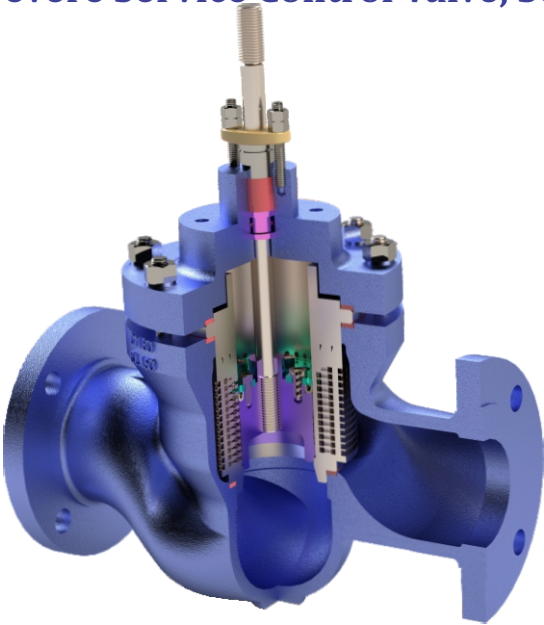
- ▶ Sizes: DN 15 To DN 1000
- ▶ Rating: 150# To 2500#
- ▶ All Materials are available on request
- ▶ **Cryogenic application valve available**



Features

- ▶ Precision Control valve
- ▶ Excellent in handling clean fluids, gases and steam
- ▶ Noise abating trim designs available
- ▶ Anti-Cavitation & flashing trim designs available
- ▶ Multi Spring diaphragm & Compact design actuator available

Severe Service Control Valve, Series - 1600



- ▶ Sizes: DN 25 To DN 600
- ▶ Rating: 150# To 2500#
- ▶ All Materials are available on request

Features

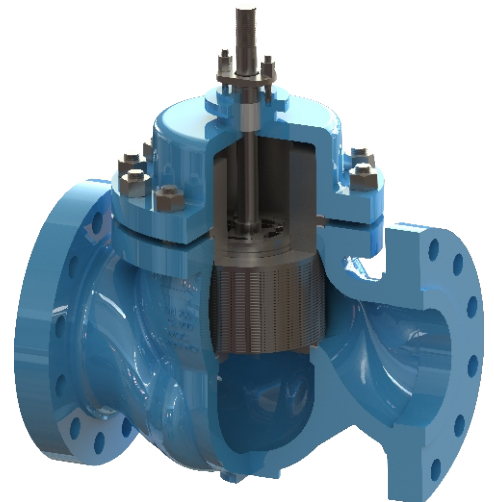
- ▶ High Pressure multi cage anti cavitation trim design available
- ▶ Low noise trims design
- ▶ Customized trim design available as per various severe service requirements

Stacked Trim Control Valve, Series - 1800

- ▶ Sizes: DN 25 To DN 600
- ▶ Rating: 150# To 2500#
- ▶ All Materials are available on request

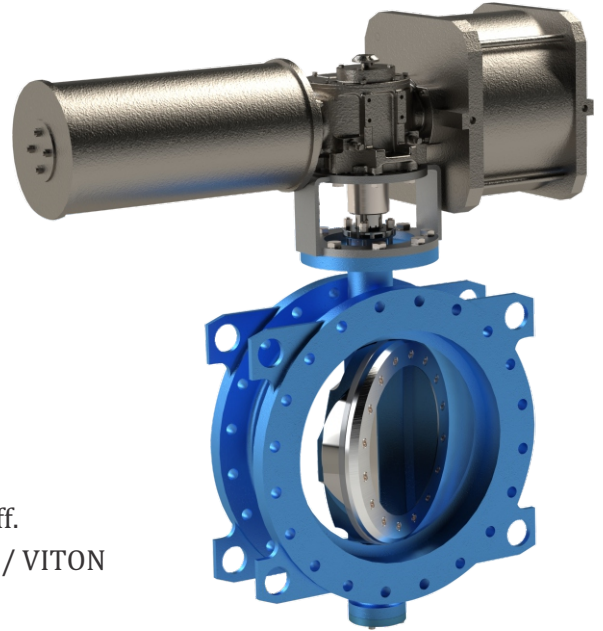
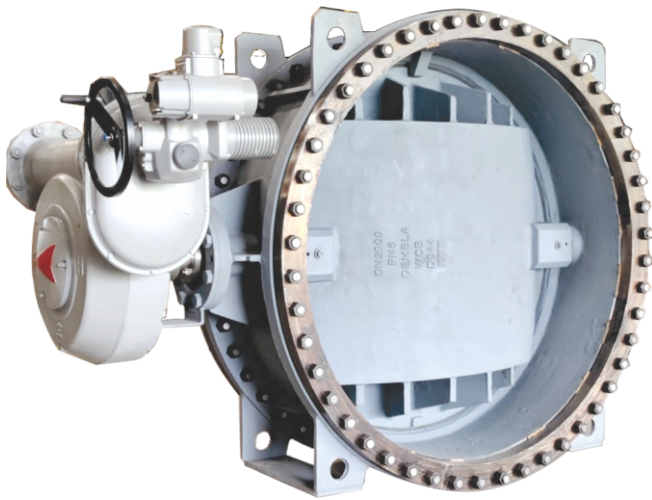
Features

- ▶ Multi stage multipath trim design
- ▶ Provide restriction and expansion channel to control the pressure drop of the fluid
- ▶ Prevent cavitation problem & eliminates trim erosion
- ▶ Customized trim design available as per various severe service requirements



High Performance Double Offset Butterfly Valve, Series - 7400

- ▶ Sizes: DN 50 to DN 3000
- ▶ Rating: 150#, 300#
- ▶ All Materials are available on request

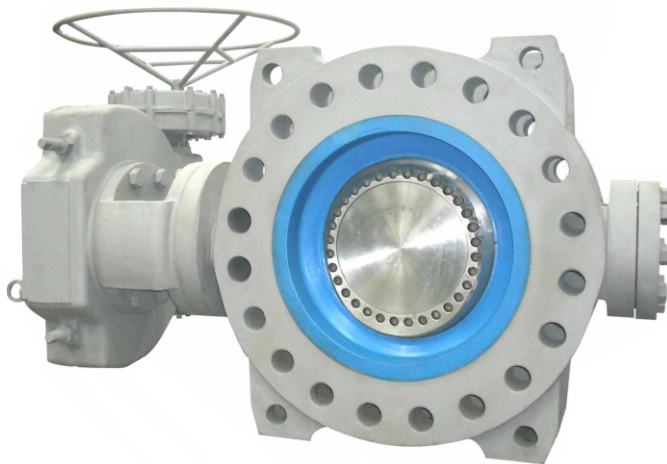


Features

- ▶ Valves are designed with soft seat to achieve bidirectional shut-off.
- ▶ Wide choice of various seat MOC : PTFE / RPTFE/ SS316 / EPDM / VITON
- ▶ Anti Blow out proof stem design
- ▶ Wafer , Lugged and Double Flanged design available
- ▶ Pneumatic, Electrical and Electro Hydraulic Actuator available

Triple Offset Butterfly Valve, Series - 7600

- ▶ Sizes: DN 80 to DN 1200
- ▶ Rating: 150#, 300#, 600#
- ▶ All Materials are available on request
- ▶ Cryogenic application valve available



Features

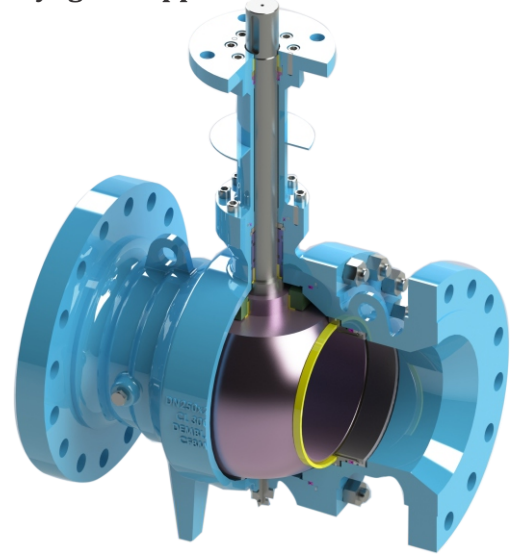
- ▶ Metal to metal tight shut off with **Rate 'A'** as per ISO 5208
- ▶ Inherently Fire Safe Design
- ▶ Laminated Seals & metal seated design available
- ▶ Suitable to handle high temperature and abrasive application
- ▶ Bidirectional
- ▶ Anti Blow out proof stem design
- ▶ Pneumatic, Electrical and Electro Hydraulic Actuator



Trunnion Ball Valve, Series - 8200



- ▶ Sizes: DN 50 To DN 1500
- ▶ Rating: 150# To 2500#
- ▶ All Materials are available on request
- ▶ **Cryogenic application valve available**



Features

- ▶ Soft Seated & Metal Seat tight Shutoff with **Rate 'A'** as per ISO 5208
- ▶ Most Popular & Reliable Valve For Isolation & Shut Down Applications
- ▶ Three Piece, Two Piece Designs Available ▶ Stellite Ball & Seats For Tight Shut In Abrasive Fluids
- ▶ Auto Cavity Relief Design ▶ Available for emergency shutdown application
- ▶ Pneumatic, Electrical and Electro Hydraulic Actuator available

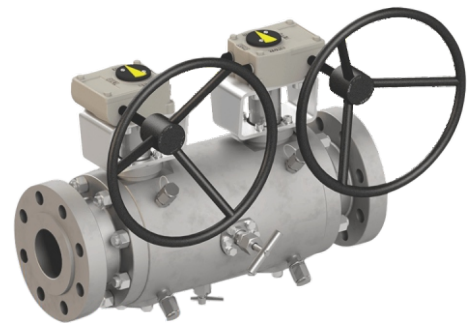
DBB Ball Valve, Series - DBB-01



Features

- ▶ Live Loaded Gland Packing
- ▶ Antistatic & Locking Device
- ▶ Blow Out Proof Stem design
- ▶ Equalized Cavity Pressure

- ▶ Sizes: DN 15 To DN 500
- ▶ Rating: 150# To 2500#
- ▶ All Materials are available on request
- ▶ **Cryogenic application valve available**



Floating Ball Valve, Series - 8100



Features

- ▶ Live Loaded gland packing,
- ▶ Antistatic & Locking Device
- ▶ Blow Out Proof Stem,
- ▶ Integral Actuator Mounting Pad
- ▶ Available in Soft Seat & Metal Seat
- ▶ Screwed, Socket weld, Butt weld and Double Flanged End connection

- ▶ Sizes: DN 15 To DN 200
- ▶ Rating: 150# To 300#
- ▶ All Materials are available on request



Gate Globe Check Valve, Series - GTV-01, GBV-01, SCV-01



- ▶ Sizes: DN 50 To DN 1200
- ▶ Rating: 150#, 300#, 600#, 900#, 1500#, 2500#
- ▶ All Materials are available on request
- ▶ Cryogenic application valve available



Features - Gate Valve

- ▶ Flexible/Solid wedge
- ▶ Flanged/Screwed / Socket and Butt weld end connection
- ▶ By Pass Arrangement for pressure equalisation
- ▶ Rising Stem/Non Rising stem
- ▶ All types of trims as per API 600

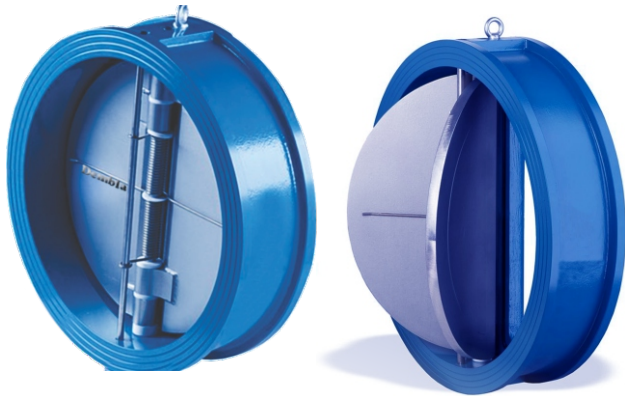
Features - Globe Valve

- ▶ Rising stem
- ▶ Parabolic disc on request
- ▶ Vertical /Horizontal Mounting
- ▶ All types of trims as per API 600

Features - Check Valve

- ▶ Lever and Counter Weight arrangement as required
- ▶ Full bore and Pigging design
- ▶ Soft / Metal seat
- ▶ All types of trims as per API 600

Dual Plate Check Valve, Series DPCV-01



- ▶ Sizes: DN 50 To DN 1500
- ▶ Rating: 150#, 300#, 600#, 900#, 1500#, 2500#
- ▶ All Materials are available on request

Features

- ▶ Compact & light weight design
- ▶ Prevent back flow
- ▶ Positive closing due to spring loaded design

Plug Valve, Series PLV-01



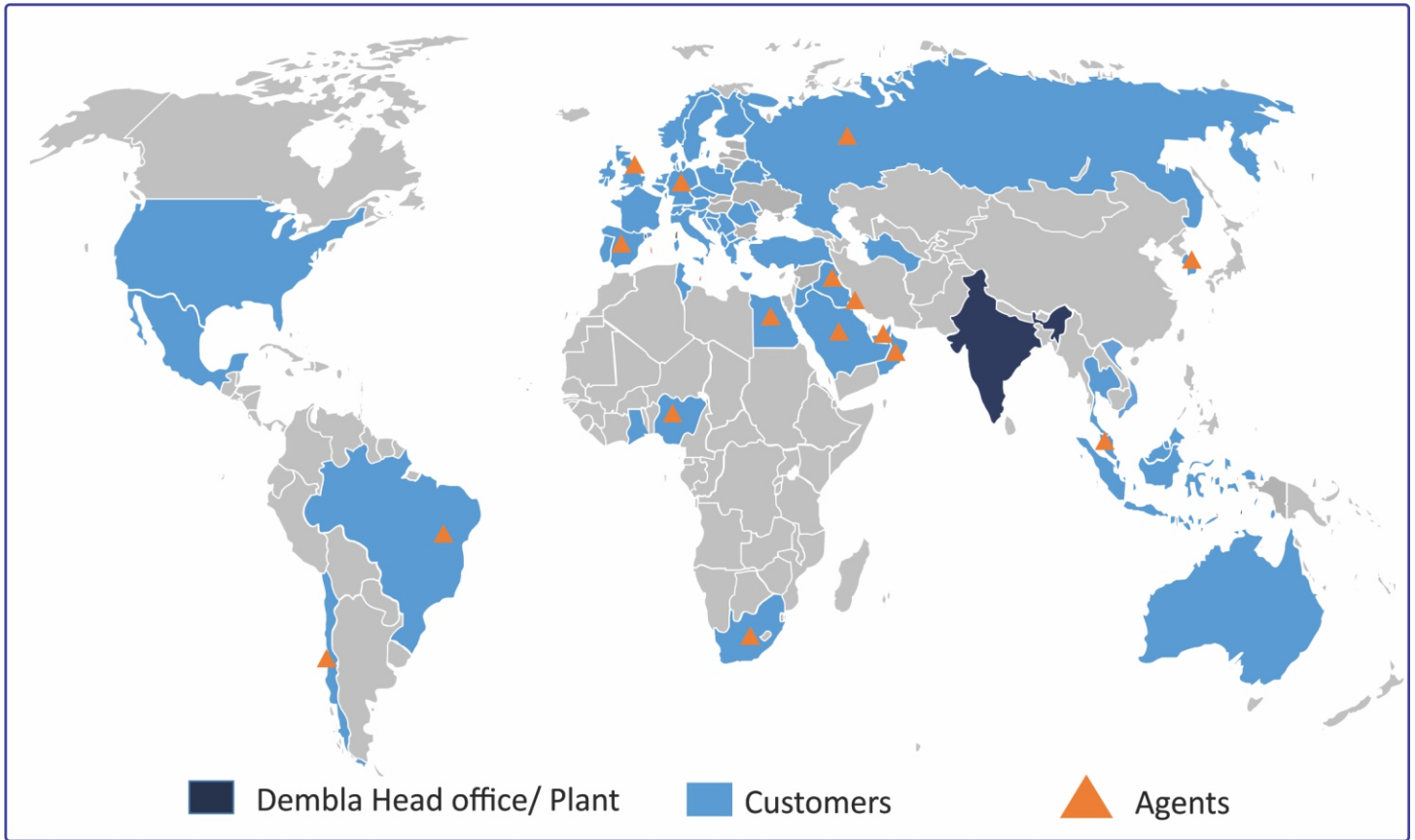
- ▶ Sizes: DN 25 To DN 400
- ▶ Rating: 150#, 300#, 600#
- ▶ All Materials are available on request

Features

- ▶ Live Loaded gland packing,
- ▶ Antistatic & Locking Device
- ▶ Blow Out Proof Stem,
- ▶ Integral Actuator Mounting Pad
- ▶ Available in Soft Seat & Metal Seat
- ▶ Screwed, Socket weld, Butt weld and Double Flanged End connection



Worldwide supply & Installation Base



Certifications

- ▶ ISO Certificate 9001:2015
- ▶ ISO Certificate 14001:2015
- ▶ ISO Certificate 45001:2018
- ▶ CE Certificate
- ▶ ATEX Certificate
- ▶ API 6D Certificate – Ball Valve
- ▶ API 609 Certificate – Butterfly Valve
- ▶ SIL 3 Certificate - Ball Valve, Butterfly Valve, Globe Control Valves
- ▶ Fire Safe Certificate – Ball Valve, Butterfly Valve
- ▶ TRCU – Ball Valve, Butterfly Valve, Globe Control Valves, Gate Globe Check Valves

Head Office:

Dembla Valves Ltd.
C-30, Jai Matadi Compound, Kalher
Village, Thane-Bhiwandi-Agra Raod -421302,
Maharashtra, India.
Tel - +91-9292234790 - 97
E-mail - marketing@dembla.com
[More info - www.dembla.com](http://www.dembla.com)

Factory:

Dembla Valves Ltd.
A/8, Arahm Logic Park, Valshind Village,
Mumbai -Nashik Highway (Nh3),
Bhiwandi, Thane - 421302.
Maharashtra (India)



[More info - www.dembla.com](http://www.dembla.com)